

# **IMPACT OF THE NATIONAL PARK MANAGEMENT PLAN**



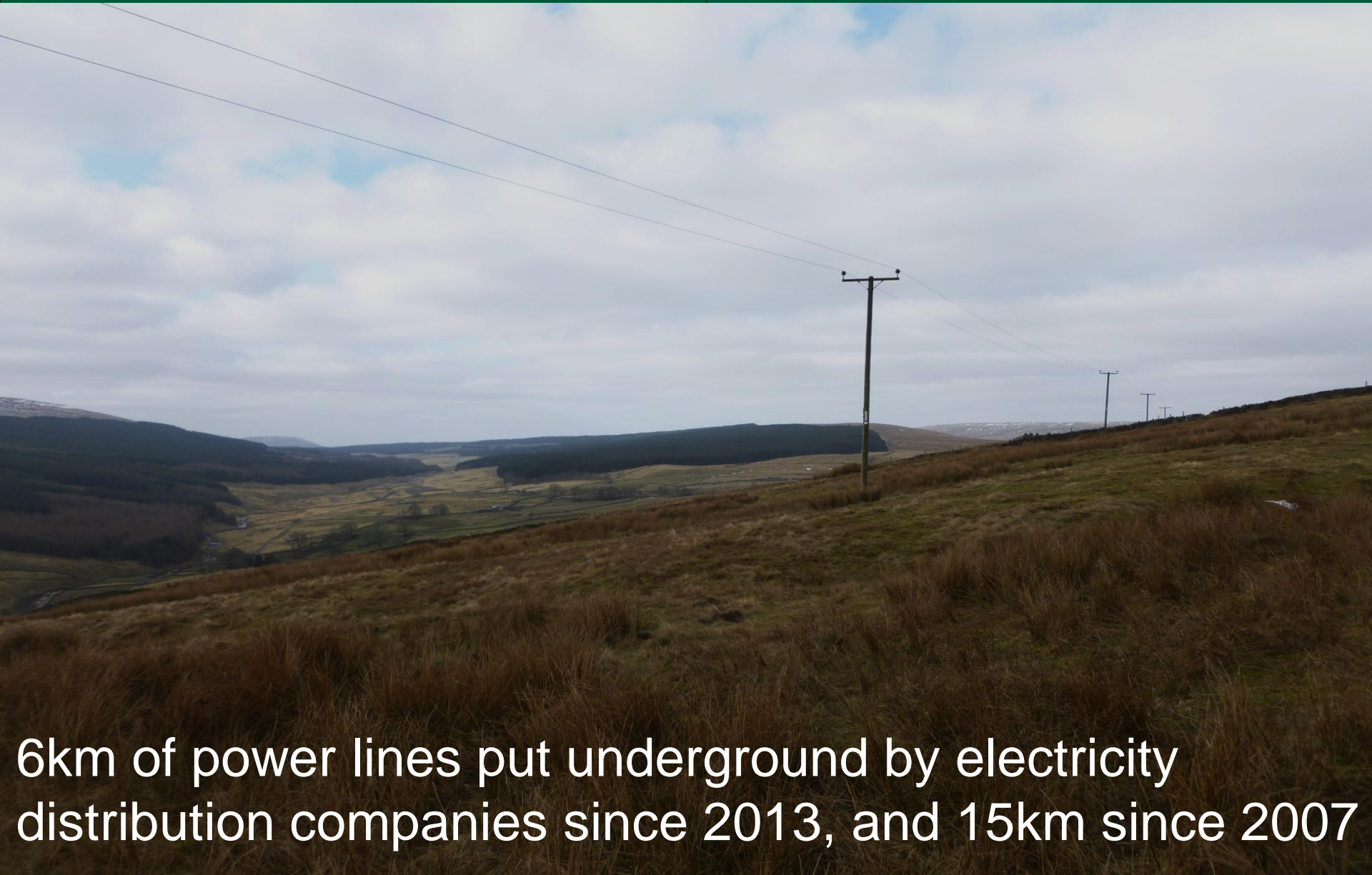
**YORKSHIRE DALES**  
National Park Authority

*A. A distinctive, living, working cultural landscape that tells the story of generations of people interacting with their environment*





# A9 Overhead power lines



6km of power lines put underground by electricity distribution companies since 2013, and 15km since 2007



**YORKSHIRE DALES**  
National Park Authority

*B. A friendly, open,  
and welcoming  
place with  
outstanding  
opportunities to  
enjoy its special  
qualities*





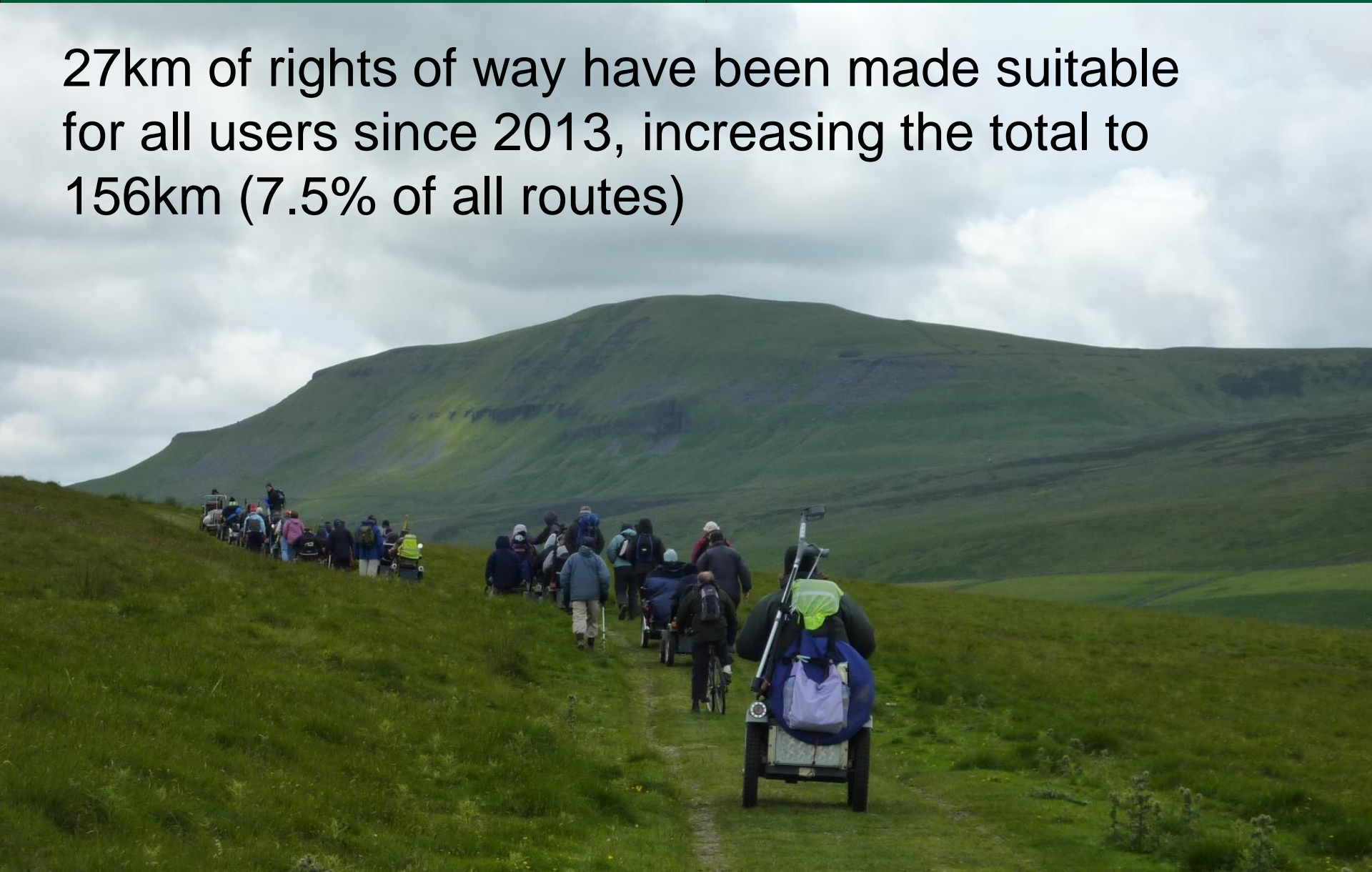
# B2 Rights of Way



Over the last 5 years, YDNPA has maintained rights of way so that 90% were 'easy to use' by the public

# B5 'Access for all'

27km of rights of way have been made suitable for all users since 2013, increasing the total to 156km (7.5% of all routes)





# B8 YDNPA Volunteer input since 2013



**£1 = £3.66**

invested in  
volunteering

value that volunteers  
gave back





# B9 World class cycling



The Tour de France contributed more than £600 million to the local economy and 94% of people surveyed indicated that they were likely to return to the area



*C. Home to the finest variety of wildlife in  
England*



**YORKSHIRE DALES**  
National Park Authority





# C6 Parish Wildlife Projects

The number of sites being managed by local groups has increased from 20 to 37 since 2013







*D. Resilient and responsive to the impacts of climate change, storing more carbon each year than it produces*





# D1 Peatland restoration

Over 9,000ha of internationally important habitat restored since 2013 by the Yorkshire Peat Partnership





# D2 Renewable energy



Over 3 mW  
installed by local  
businesses and  
homeowners since  
2013



# D6 New native woodland

230ha planted since 2013, and over 750ha since 2006, with funding from Forestry Commission, Yorkshire Dales Millennium Trust and YDNPA





# D7 Woodland management

67% of woodland is in active management (up from 56% in 2013), with funding from Forestry Commission and YDNPA





# D8 Road haulage



Road haulage from  
quarries in  
Ribblesdale  
reduced by 31%  
and a new rail halt  
installed by  
Lafarge Tarmac





*E. Providing an outstanding range of benefits for the nation based on its natural resources, landscape and cultural heritage, which underpin a flourishing local economy*



# E2 Broadband



8,000 properties (71%) have access to superfast broadband delivered by North Yorkshire and Cumbria County Councils.

In addition, 8 local wireless broadband schemes provide differing levels of speed

B4RN Community schemes provide hyperfast broadband to 6 parishes in the west of the National Park





**YORKSHIRE DALES**  
National Park Authority

*F. Home to strong,  
self-reliant and  
balanced  
communities, with  
good access to  
the services they  
need*





# F4 Sustainable Development Fund

Since 2013, 94 projects have been funded through over £600,000 of grants from YDNPA's Sustainable Development Fund, Richmondshire District Councils Communities Opportunity Fund and Craven District Council and South Lakeland District Councils New Homes Bonus funds

